

Cycle 3

HA 15 Nore Catchment Report, May 2024

Introduction

Water Quality  
Summary

High Status  
Objectives

Water Quality  
Changes

WFD Risk

Significant  
Pressures

Action

Summary  
Information

# Introduction

This report provides an overview of the water quality in the Nore Catchment and the pressures impacting on water quality. This report is based on data up to 2021. The latest water quality data, dashboards and maps throughout this report are available on [catchments.ie](https://catchments.ie) and [EPA Water Map](https://epa.maps.ie).

The Nore Catchment includes the area drained by the River Nore and all streams entering tidal water between its confluence with the River Barrow at Ringwood, and the Barrow railway bridge at Drumdowney, Co. Kilkenny, draining a total area of 2,595km<sup>2</sup>. The largest urban centre in the catchment is Kilkenny. The other main urban centres in this catchment are Abbeyleix, Callan and Thomastown.

The Nore catchment is divided into 21 subcatchments with 123 river waterbodies, five transitional waterbodies and 48 groundwater bodies.

[View the Nore Catchment  
on the EPA Water Map](https://epa.maps.ie)

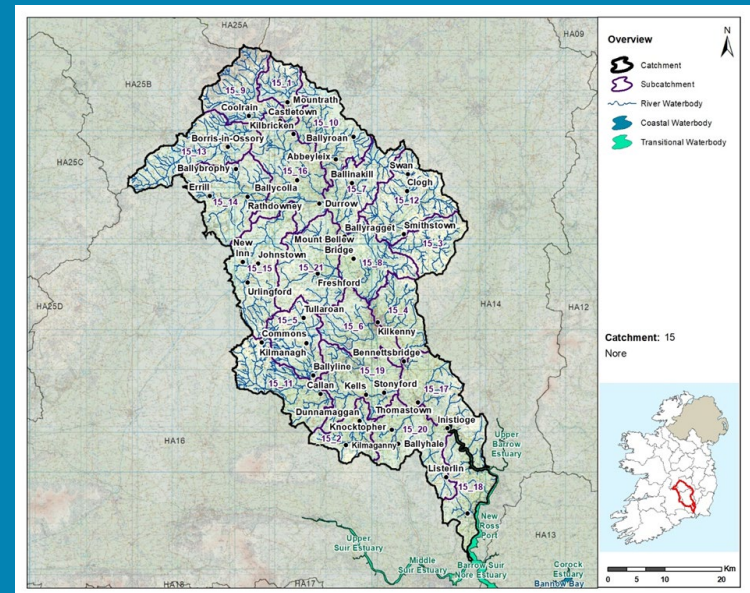
## Previous Catchment Assessments

Previous catchment assessments, which provide additional historic context and information, are archived on [catchments.ie](https://catchments.ie):

- [Cycle 2 Catchment Assessments – published September 2018](#)
- [Cycle 3 Draft Catchment Assessments – published September 2021](#)

## Online Dashboards

Links to online dashboards are provided in this report – these numbers may vary from those in this document as time progress and the online dashboards are updated based on the latest data and scientific assessments.



Overview of Subcatchments in the Nore Catchment

Introduction

Water Quality  
Summary

High Status  
Objectives

Water Quality  
Changes

WFD Risk

Significant  
Pressures

Action

Summary  
Information

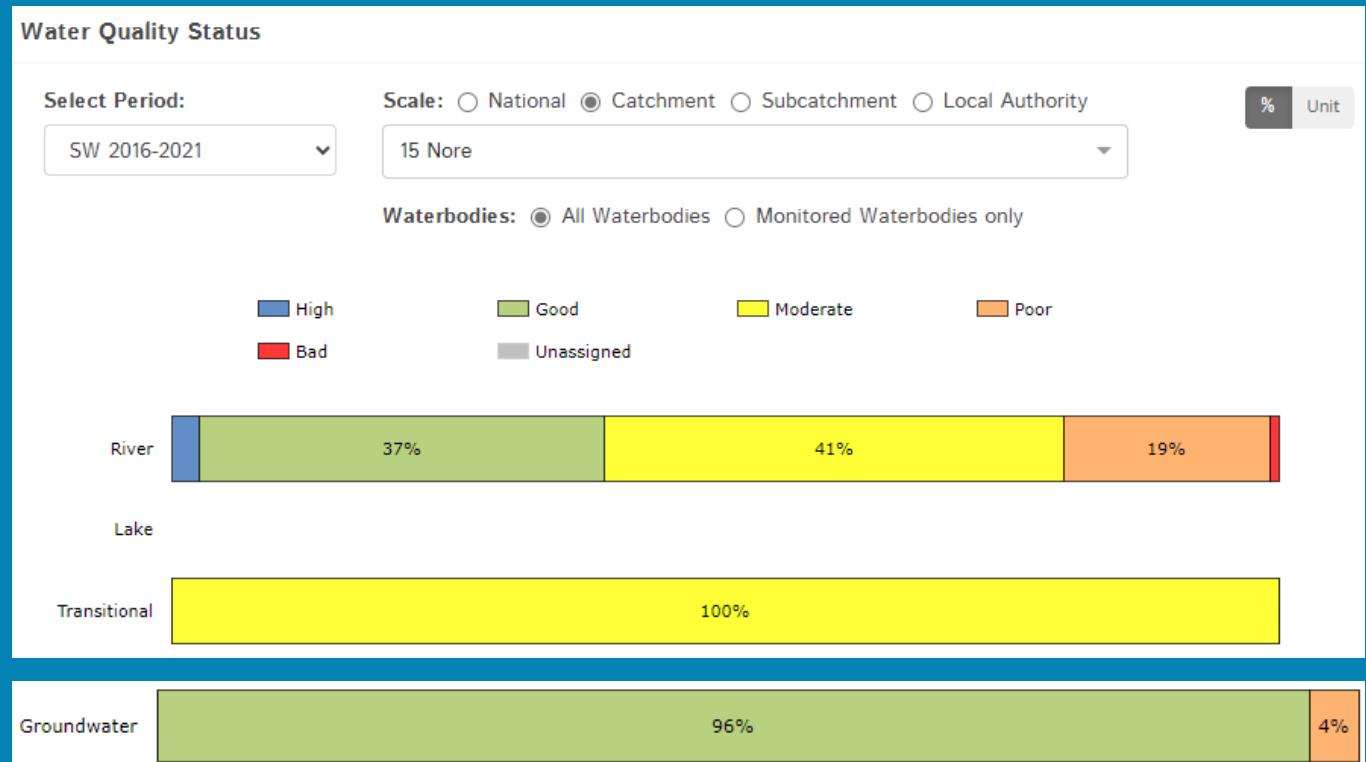
# Water Quality Summary

The dashboard below provides a breakdown of water quality status for surface and groundwater bodies in the Nore Catchment.

A total of 38% of surface waterbodies were at Good or High Ecological Status in the 2016-2021 monitoring period. Ninety-six percent of groundwater bodies were at Good status.

**Go to EPA Water Maps  
for WFD Status**

[EPA Water Map](#)



Water quality status 2016-2021 for the Nore Catchment.

View Online Dashboard: <https://www.catchments.ie/data/#/dashboard/waterquality>

# High Status Objective Waterbodies

Introduction

High status waters are prioritised for protection and action.

There are seven waterbodies with a **High Ecological Status Objective** (HSO) in the Nore Catchment, with six currently not meeting their environmental objective of High.

Water Quality  
Summary

Grants for septic tank upgrades may be available in high status objective catchment areas - you can learn more and check your Eircode for eligibility here: <https://www.gov.ie/en/publication/6cc1e-domestic-waste-water-treatment-systems-septic-tanks>

[View HSO river waterbodies in this catchment.](#)

See *Status and Risk / High Status Objective* for other waterbody types.

High Status  
Objectives

Water Quality  
Changes

WFD Risk

Significant  
Pressures

Action

Summary  
Information

Water Quality Status - High Status Objective Waterbodies

Select Type:  Scale:  Catchment  Local Authority

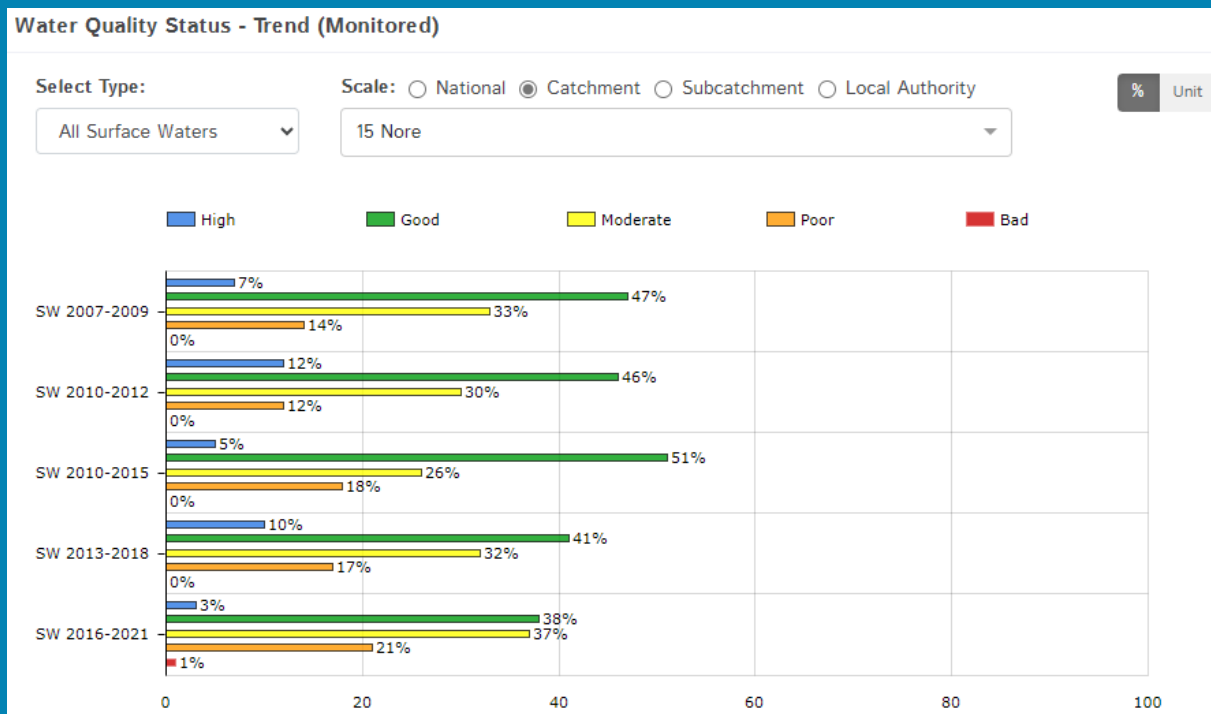
	SW 2007-2009	SW 2010-2012	SW 2010-2015	SW 2013-2018	SW 2016-2021
DELOUR_010 (River)	Good	High	High	High	Good
DELOUR_020 (River)	High	High	High	High	High
DELOUR_030 (River)	High	High	High	High	Good
KILLEEN (DELOUR)_010 (River)	Good	High	High	Good	Good
MUCKALEE_010 (River)	High	High	Good	Good	Good
NEEDLEFORD STREAM_010 (River)	High	High	Good	High	Good
TONET_010 (River)	High	High	High	High	Good

Water quality status for High Ecological Status Objective waterbodies.

View **Online Dashboard**: <https://www.catchments.ie/data/#/dashboard/waterquality>

# Water Quality Changes

Below illustrates the changes in ecological status in monitored surface waterbodies over the last five monitoring cycles in the Nore Catchment. Nationally while there have been improvements in some waterbodies, these have been offset by declines elsewhere.



Ecological status trends for monitored surface waterbodies over the last five monitoring cycles in the Nore Catchment.

**View online dashboard:** <https://www.catchments.ie/data/#/dashboard/waterquality>

A total of 88 (50%) waterbodies are currently meeting their environmental objective of Good or High Ecological Status.

	Total	Achieving Environmental Objectives (2016-2021)	High Status Environmental Objectives Waterbodies	Achieving High Status Environmental Objectives (2016-2021)
<b>Rivers</b>	123	42 (34%)	7	1 (14%)
<b>Canals</b>	-	-	-	-
<b>Lakes</b>	-	-	-	-
<b>Transitional</b>	5	0 (0%)	0	0 (0%)
<b>Coastal</b>	-	-	-	-
<b>Groundwater</b>	48	46 (96%)	0	0 (0%)

Introduction

Water Quality Summary

High Status Objectives

Water Quality Changes

WFD Risk

Significant Pressures

Action

Summary Information

Introduction

Water Quality  
Summary

High Status  
Objectives

Water Quality  
Changes

WFD Risk

Significant  
Pressures

Action

Summary  
Information

## WFD Risk

A total of 70 (40%) waterbodies are *At Risk* of not meeting their environmental objective in the Nore Catchment, while 34 (19%) are under *Review* and 72 (41%) are *Not At Risk*.

Go to [EPA Water Map](#) to see  
WFD Risk for this catchment



WFD Risk for the Nore Catchment based on 2016-2021 data.

View Online Dashboard: <https://www.catchments.ie/data/#/dashboard/waterquality>

There are currently three heavily modified water bodies (HMWBs) in the Nore Catchment (New Ross Port, Lower Suir Estuary (Little Island – Cheekpoint) and Bregagh (Kilkenny)\_030). All three waterbodies are *At Risk*.

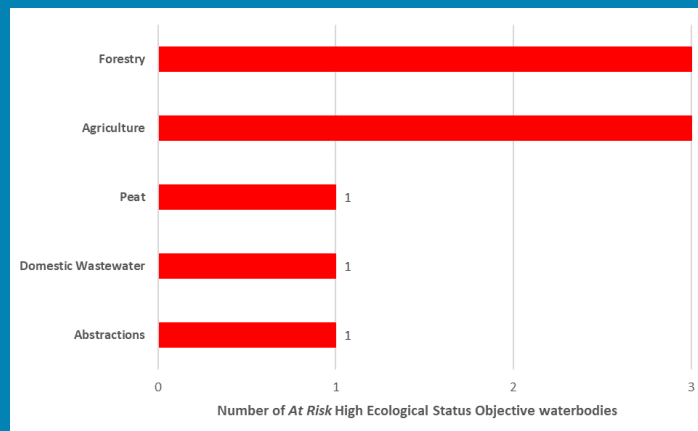
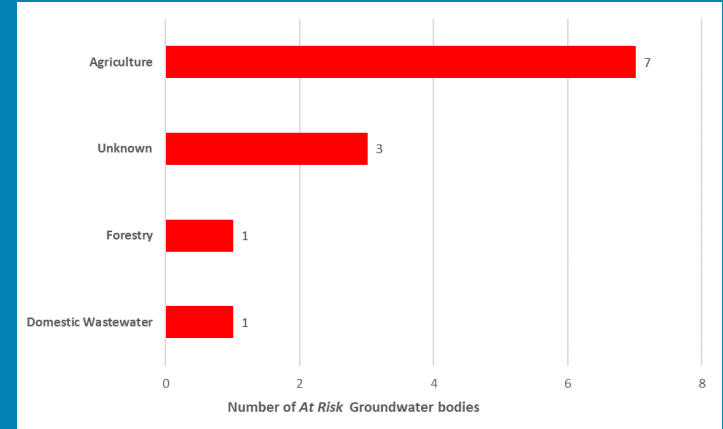
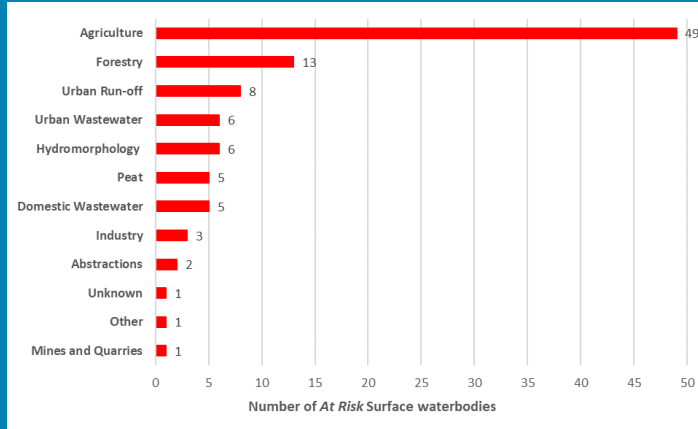
There are no artificial waterbodies in the Nore Catchment.

The [EPA's characterisation outcome report](#) has more information on WFD Risk

Click [here](#) for more information on significant pressures

## Significant Pressures driving risk

Significant pressure types impacting the 63 *At Risk* surface waterbodies and seven groundwater bodies are broken down in the figures below, including significant pressure information for the five *At Risk* High Ecological Status Objective waterbodies.



The issues driven by these pressures are mainly nutrient pollution, organic pollution and altered morphological condition (habitat) impacts for surface water, and nutrient pollution and chemical quality diminution for surface water for groundwaters. For more information, see <https://www.catchments.ie/data/#/dashboard/pressure?k=i351zs>.

*Go to the Summary Information section to get significant pressure and issue data for At Risk waterbodies within the Nore Catchment.*

Introduction

Water Quality Summary

High Status Objectives

Water Quality Changes

WFD Risk

Significant Pressures

Action

Summary Information



Introduction

Water Quality  
Summary

High Status  
Objectives

Water Quality  
Changes

WFD Risk

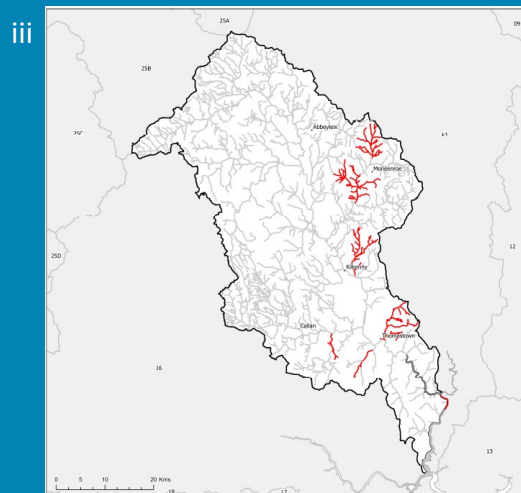
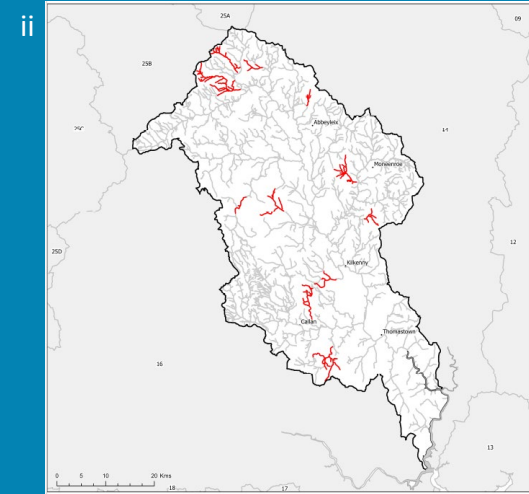
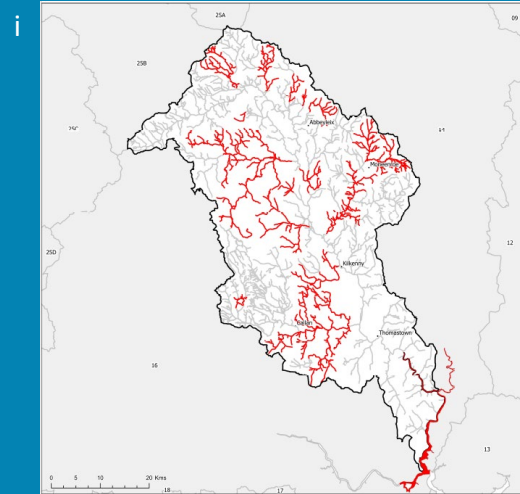
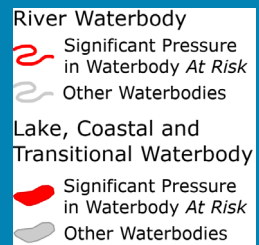
Significant  
Pressures

Action

Summary  
Information

## Significant Pressures

Agriculture is the top significant pressure impacting 80% of the 70 *At Risk* waterbodies within the Nore Catchment, followed by 20% impacted by forestry and 11% by urban run-off.



**The catchments.ie dashboards will show all significant pressures identified for this catchment.**

[www.catchments.ie/data/#/dashboard/pressure](http://www.catchments.ie/data/#/dashboard/pressure)

Go to the [EPA Water Maps](#) for the locations of all significant pressure types identified for this catchment

Locations of *At Risk* surface waterbodies impacted by i) Agriculture, ii) Forestry and iii) Urban Run-off.



Introduction

Water Quality  
Summary

High Status  
Objectives

Water Quality  
Changes

WFD Risk

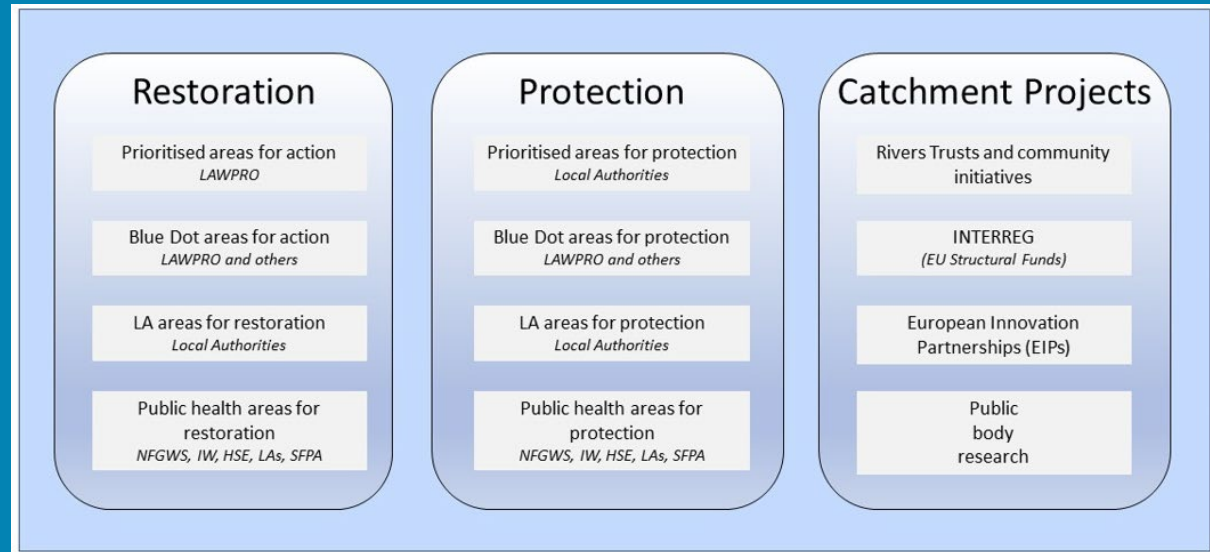
Significant  
Pressures

Action

Summary  
Information

## Priority Areas for Action

A number of waterbodies have been prioritised through the selection of Areas for Action. There were seven Priority Areas for Action identified for the second river basin management planning cycle in the Nore Catchment. This has increased to a total of 13 Areas for Restoration, eight Areas for Protection and two Catchment Projects for the third cycle. ***Go to the summary information section to get Area for Action information for waterbodies within the Nore Catchment.***



*Types of Areas for Action under the third cycle River Basin Management Plan*

- View the current progress of Areas for Action and Summary Reports completed by LAWPRO, on catchments.ie and the EPA Water Map:
  - <https://www.catchments.ie/data/#/areaforaction>
  - [https://gis.epa.ie/EPAMaps/default?eastings=?&northing=?&lid=EPA:WFD\\_AreasForAction](https://gis.epa.ie/EPAMaps/default?eastings=?&northing=?&lid=EPA:WFD_AreasForAction)
- LAWPRO have also published detailed desktop studies on Prioritised Areas for Action (PAAs) which are available their website: <https://lawaters.ie/desktop-studies/>
- Information on Areas for Action for the second cycle is available in Cycle 2 Catchment Assessments which have been archived on catchments.ie:  
<https://www.catchments.ie/download/cycle-2-catchment-assessments-published-september-2018/>

Introduction

Water Quality  
Summary

High Status  
Objectives

Water Quality  
Changes

WFD Risk

Significant  
Pressures

Action

Summary  
Information

## Summary information for all waterbodies in the Nore Catchment

The next page provides a table with a breakdown of key information for all waterbodies in this catchment. The key is provided below. Additional information for each waterbody is available on <https://www.catchments.ie/data>, including a breakdown of status, a monitoring schedule for monitored waterbodies and downloadable chemistry results, where available.

<b>Protected Area categories</b>	BW: Bathing Water DW: Drinking Water Fish: Salmonid Waters NSA: Nutrient Sensitive Areas SAC: Special Area of Conservation, Natura 2000 (water dependent habitats and species) SF: Shellfish Area SPA: Special Area of Protection, Natura 2000 (water dependent habitat and species)
<b>Significant pressure* types categories</b>  <i>* For At Risk waterbodies only</i>	Ab: Abstractions Ag: Agriculture Aq: Aquaculture At: Atmospheric DWW: Domestic Wastewater For: Forestry HPS: Historically polluted sites HYMO: Hydromorphology Ind: Industry IS: Invasive Species M+Q: Mines and Quarries Peat: Peat Drainage and Extraction UR: Urban Run-Off UWW: Urban Wastewater Was: Waste WT: Water Treatment

Catchment Code	Waterbody (WB) Code	WB Name	WB Type	Local Authority	Protected Area	Status 10-15	Status 13-18	Status 16-21	Environmental Objective	Environmental Objective Date	WFD Risk 16-21	Significant Issue(s)	Significant Pressure(s)	Area for Action (AFA)	AFA (lead, type)	Link to WB page on catchments.ie	Link to WB on EPA Water Map
14, 15, 16	IE_SE_G_009	Ballingarry	Groundwater	Kilkenny County Council	DWPA; SAC	Good	Good	Good	Good	2021 or earlier	Not at risk					<a href="#">View WB Page</a>	<a href="#">View WB on EPA Water Map</a>
14, 15, 16	IE_SE_G_021	Bennettsbridge	Groundwater	Kilkenny County Council	DWPA; SAC	Good	Good	Good	Good	2021 or earlier	Not at risk					<a href="#">View WB Page</a>	<a href="#">View WB on EPA Water Map</a>
15	IE_SE_G_026	Callan	Groundwater	Kilkenny County Council	DWPA	Good	Good	Good	Good	2021 or earlier	At risk	ChemicalQualityDiminution ForSW, Nutrients	Ag			<a href="#">View WB Page</a>	<a href="#">View WB on EPA Water Map</a>
14, 15, 25A, 25B	IE_SE_G_027	Camross	Groundwater	Laois County Council	DWPA; SAC	Good	Good	Good	Good	2021 or earlier	Not at risk					<a href="#">View WB Page</a>	<a href="#">View WB on EPA Water Map</a>
15, 16, 18	IE_SE_G_030	Carrick-on-Suir	Groundwater	Waterford City & County Council	DWPA; SAC	Good	Good	Good	Good	2021 or earlier	At risk	ChemicalQualityDiminution ForSW, Nutrients	DWTS, For, Ag			<a href="#">View WB Page</a>	<a href="#">View WB on EPA Water Map</a>
14, 15	IE_SE_G_034	Castlecomer	Groundwater	Kilkenny County Council	DWPA; SAC	Good	Good	Good	Good	2021 or earlier	Not at risk					<a href="#">View WB Page</a>	<a href="#">View WB on EPA Water Map</a>
14, 15	IE_SE_G_038	Clifden	Groundwater	Kilkenny County Council	DWPA; SAC	Good	Good	Good	Good	2021 or earlier	Not at risk					<a href="#">View WB Page</a>	<a href="#">View WB on EPA Water Map</a>
14, 15, 25A	IE_SE_G_039	Clonaslee	Groundwater	Laois County Council	DWPA; SAC	Good	Good	Good	Good	2021 or earlier	Not at risk					<a href="#">View WB Page</a>	<a href="#">View WB on EPA Water Map</a>
15, 16, 18	IE_SE_G_040	Clonmel	Groundwater	Tipperary County Council	DWPA; SAC	Good	Good	Good	Good	2021 or earlier	At risk	Nutrients	Ag, Unknown			<a href="#">View WB Page</a>	<a href="#">View WB on EPA Water Map</a>
14, 15, 25B	IE_SE_G_047	Coolrain	Groundwater	Laois County Council	DWPA; SAC	Good	Good	Good	Good	2021 or earlier	Not at risk					<a href="#">View WB Page</a>	<a href="#">View WB on EPA Water Map</a>
15, 25B	IE_SE_G_050	Derrymore Gravels	Groundwater	Tipperary County Council	DWPA	Good	Good	Good	Good	2021 or earlier	Not at risk					<a href="#">View WB Page</a>	<a href="#">View WB on EPA Water Map</a>
15, 16	IE_SE_G_051	Donaghmore	Groundwater	Laois County Council	DWPA	Good	Good	Good	Good	2021 or earlier	Not at risk					<a href="#">View WB Page</a>	<a href="#">View WB on EPA Water Map</a>
14, 15, 16	IE_SE_G_076	Inistioge	Groundwater	Kilkenny County Council	DWPA; SAC	Good	Good	Good	Good	2021 or earlier	Not at risk					<a href="#">View WB Page</a>	<a href="#">View WB on EPA Water Map</a>
14, 15, 16	IE_SE_G_078	Kilkenny	Groundwater	Kilkenny County Council	DWPA; SAC	Good	Good	Good	Good	2021 or earlier	At risk	ChemicalQualityDiminution ForSW, Nutrients	Unknown, Ag			<a href="#">View WB Page</a>	<a href="#">View WB on EPA Water Map</a>
15, 16	IE_SE_G_081	Killenaule	Groundwater	Tipperary County Council	DWPA	Good	Good	Good	Good	2021 or earlier	Not at risk					<a href="#">View WB Page</a>	<a href="#">View WB on EPA Water Map</a>
15	IE_SE_G_083	Kilmanagh Gravels	Groundwater	Kilkenny County Council	DWPA; SAC	Good	Good	Good	Good	2021 or earlier	Not at risk					<a href="#">View WB Page</a>	<a href="#">View WB on EPA Water Map</a>
15	IE_SE_G_088	Lisdowney	Groundwater	Kilkenny County Council	DWPA; SAC	Good	Good	Good	Good	2021 or earlier	Not at risk					<a href="#">View WB Page</a>	<a href="#">View WB on EPA Water Map</a>
14, 15	IE_SE_G_104	Newtown	Groundwater	Kilkenny County Council	DWPA; SAC	Good	Good	Good	Good	2021 or earlier	Not at risk					<a href="#">View WB Page</a>	<a href="#">View WB on EPA Water Map</a>
14, 15, 25A	IE_SE_G_107	Portlaoise	Groundwater	Laois County Council	DWPA; SAC	Good	Good	Good	Good	2021 or earlier	Not at risk					<a href="#">View WB Page</a>	<a href="#">View WB on EPA Water Map</a>
14, 15, 16, 25B	IE_SE_G_114	Rathdowney	Groundwater	Laois County Council	DWPA; SAC	Good	Good	Good	Good	2021 or earlier	Not at risk					<a href="#">View WB Page</a>	<a href="#">View WB on EPA Water Map</a>
14, 15, 25A	IE_SE_G_118	Rosenallis	Groundwater	Laois County Council	DWPA; SAC	Good	Good	Good	Good	2021 or earlier	Not at risk					<a href="#">View WB Page</a>	<a href="#">View WB on EPA Water Map</a>
15, 16	IE_SE_G_119	Shanahoe	Groundwater	Laois County Council	DWPA; SAC	Good	Good	Good	Good	2021 or earlier	Not at risk					<a href="#">View WB Page</a>	<a href="#">View WB on EPA Water Map</a>
14, 15	IE_SE_G_124	Shanragh	Groundwater	Laois County Council	DWPA; SAC	Good	Good	Good	Good	2021 or earlier	Not at risk					<a href="#">View WB Page</a>	<a href="#">View WB on EPA Water Map</a>
15, 16	IE_SE_G_126	Slieveardagh Hills	Groundwater	Tipperary County Council	DWPA	Good	Good	Good	Good	2021 or earlier	Not at risk					<a href="#">View WB Page</a>	<a href="#">View WB on EPA Water Map</a>
15	IE_SE_G_128	Stoneyford Gravels	Groundwater	Kilkenny County Council	DWPA; SAC	Good	Good	Poor	Good	2022-2027	At risk	ChemicalQualityDiminution ForSW, Nutrients	Ag			<a href="#">View WB Page</a>	<a href="#">View WB on EPA Water Map</a>
15, 16, 24, 25B, 25C, 25D	IE_SE_G_131	Templemore	Groundwater	Tipperary County Council	DWPA; SAC	Good	Good	Good	Good	2021 or earlier	At risk	Nutrients	Unknown, Ag			<a href="#">View WB Page</a>	<a href="#">View WB on EPA Water Map</a>
15	IE_SE_G_134	GWDT- The Loughlans Turlough (SAC00407)	Groundwater	Kilkenny County Council	DWPA; SAC (GWDT)	Good	Good	Good	Good	2021 or earlier	Not at risk					<a href="#">View WB Page</a>	<a href="#">View WB on EPA Water Map</a>
14, 15, 16	IE_SE_G_135	Thomastown	Groundwater	Kilkenny County Council	DWPA; SAC	Good	Good	Good	Good	2021 or earlier	Not at risk					<a href="#">View WB Page</a>	<a href="#">View WB on EPA Water Map</a>
15, 16, 17	IE_SE_G_149	Waterford	Groundwater	Waterford City & County Council	DWPA; SAC	Good	Good	Good	Good	2021 or earlier	Not at risk					<a href="#">View WB Page</a>	<a href="#">View WB on EPA Water Map</a>
12, 13, 14, 15, 9	IE_SE_G_152	New Ross	Groundwater	Carlow County Council	DWPA; SAC	Good	Good	Good	Good	2021 or earlier	Not at risk					<a href="#">View WB Page</a>	<a href="#">View WB on EPA Water Map</a>
14, 15, 25A, 7	IE_SE_G_153	Bagenalstown Upper	Groundwater	Laois County Council	DWPA; SAC	Good	Good	Good	Good	2021 or earlier	Not at risk					<a href="#">View WB Page</a>	<a href="#">View WB on EPA Water Map</a>
15, 16	IE_SE_G_155	Mullinavat	Groundwater	Kilkenny County Council	DWPA; SAC	Good	Good	Good	Good	2021 or earlier	Not at risk					<a href="#">View WB Page</a>	<a href="#">View WB on EPA Water Map</a>
14, 15, 16	IE_SE_G_156	Durrow	Groundwater	Kilkenny County Council	DWPA; SAC	Good	Poor	Poor	Good	2022-2027	At risk	Nutrients	Ag			<a href="#">View WB Page</a>	<a href="#">View WB on EPA Water Map</a>
14, 15	IE_SE_G_157	Bagenalstown Lower	Groundwater	Carlow County Council	DWPA; SAC	Good	Good	Good	Good	2021 or earlier	Not at risk					<a href="#">View WB Page</a>	<a href="#">View WB on EPA Water Map</a>
15, 16	IE_SE_G_158	Thurles	Groundwater	Tipperary County Council	DWPA; SAC	Good	Good	Good	Good	2021 or earlier	Not at risk					<a href="#">View WB Page</a>	<a href="#">View WB on EPA Water Map</a>
14, 15, 16	IE_SE_G_159	Clifden South	Groundwater	Kilkenny County Council	DWPA; SAC	Good	Good	Good	Good	2021 or earlier	Not at risk					<a href="#">View WB Page</a>	<a href="#">View WB on EPA Water Map</a>
15, 16	IE_SE_G_161	Clifden Northwest	Groundwater	Kilkenny County Council	DWPA; SAC	Good	Good	Good	Good	2021 or earlier	Not at risk					<a href="#">View WB Page</a>	<a href="#">View WB on EPA Water Map</a>
15	IE_SE_G_163	Killkenny-Ballynakill Gravels	Groundwater	Kilkenny County Council	DWPA; SAC	Good	Good	Good	Good	2021 or earlier	Not at risk					<a href="#">View WB Page</a>	<a href="#">View WB on EPA Water Map</a>
14, 15	IE_SE_G_165	Goresbridge North	Groundwater	Kilkenny County Council	DWPA; SAC	Good	Good	Good	Good	2021 or earlier	Not at risk					<a href="#">View WB Page</a>	<a href="#">View WB on EPA Water Map</a>



14, 15	IE_SE_G_166	Goresbridge South	Groundwater	Kilkenny County Council	DWPA; SAC	Good	Good	Good	Good	2021 or earlier	Not at risk					<a href="#">View WB Page</a>	<a href="#">View WB on EPA Water Map</a>
15	IE_SE_G_168	Poormansbridge Gravels	Groundwater	Laois County Council	DWPA; SAC	Good	Good	Good	Good	2021 or earlier	Not at risk					<a href="#">View WB Page</a>	<a href="#">View WB on EPA Water Map</a>
15	IE_SE_G_171	Abbeyleix Gravels	Groundwater	Laois County Council	DWPA	Good	Good	Good	Good	2021 or earlier	Not at risk					<a href="#">View WB Page</a>	<a href="#">View WB on EPA Water Map</a>
15	IE_SE_G_174	Castletown Gravels	Groundwater	Laois County Council	DWPA; SAC	Good	Good	Good	Good	2021 or earlier	Not at risk					<a href="#">View WB Page</a>	<a href="#">View WB on EPA Water Map</a>
15, 25A, 25B	IE_SH_G_045	Bredagh	Groundwater	Offaly County Council	DWPA	Good	Good	Good	Good	2021 or earlier	Not at risk					<a href="#">View WB Page</a>	<a href="#">View WB on EPA Water Map</a>
15, 16, 25A, 25B, 25C	IE_SH_G_205	Shinrone	Groundwater	Offaly County Council	DWPA; SAC	Good	Good	Good	Good	2021 or earlier	Not at risk					<a href="#">View WB Page</a>	<a href="#">View WB on EPA Water Map</a>
14, 15, 25A, 25B	IE_SH_G_210	Slieve Bloom North	Groundwater	Laois County Council	DWPA; SAC	Good	Good	Good	Good	2021 or earlier	Not at risk					<a href="#">View WB Page</a>	<a href="#">View WB on EPA Water Map</a>
15, 25A, 25B	IE_SH_G_211	Slieve Bloom South	Groundwater	Offaly County Council	DWPA; SAC	Good	Good	Good	Good	2021 or earlier	Not at risk					<a href="#">View WB Page</a>	<a href="#">View WB on EPA Water Map</a>
15, 25B	IE_SH_G_247	Roscrea Gravels	Groundwater	Tipperary County Council	DWPA	Good	Good	Good	Good	2021 or earlier	Review					<a href="#">View WB Page</a>	<a href="#">View WB on EPA Water Map</a>
15	IE_SE_140130860	OAKLANDS_010	River	Kilkenny County Council	SAC; NSA;	Unassigned	Unassigned	Good	Good	2021 or earlier	Review					<a href="#">View WB Page</a>	<a href="#">View WB on EPA Water Map</a>
15	IE_SE_15A010400	ARIGNA (KILKENNY)_010	River	Kilkenny County Council		Good	Moderate	Moderate	Good	2022-2027	At risk	UnknowImpactType	Ag	Nuenna	LAWPRO, Restoration	<a href="#">View WB Page</a>	<a href="#">View WB on EPA Water Map</a>
15	IE_SE_15A020100	ARRIGLE_010	River	Kilkenny County Council	SAC;	Good	Good	Good	Good	2021 or earlier	Not at risk					<a href="#">View WB Page</a>	<a href="#">View WB on EPA Water Map</a>
15	IE_SE_15A020250	ARRIGLE_020	River	Kilkenny County Council	SAC;	Good	High	High	Good	2021 or earlier	Not at risk					<a href="#">View WB Page</a>	<a href="#">View WB on EPA Water Map</a>
15	IE_SE_15A020300	ARRIGLE_030	River	Kilkenny County Council	SAC;	Moderate	Moderate	Moderate	Good	2022-2027	At risk	Nutrients, Organic	Ind			<a href="#">View WB Page</a>	<a href="#">View WB on EPA Water Map</a>
15	IE_SE_15A030960	ARDREAGH_010	River	Tipperary County Council		Unassigned	Moderate	Moderate	Good	2022-2027	Review			Goul	LAWPRO, Restoration	<a href="#">View WB Page</a>	<a href="#">View WB on EPA Water Map</a>
15	IE_SE_15B010100	BALLYROAN_010	River	Laois County Council		Moderate	Poor	Moderate	Good	2022-2027	At risk	Nutrients, Organic	Ag, UWW	Ballyroan	LAWPRO, Restoration	<a href="#">View WB Page</a>	<a href="#">View WB on EPA Water Map</a>
15	IE_SE_15B010200	BALLYROAN_020	River	Laois County Council		Poor	Moderate	Poor	Good	2022-2027	At risk	Morphological, Nutrients, Organic	Unknown, HYMO	Ballyroan	LAWPRO, Restoration	<a href="#">View WB Page</a>	<a href="#">View WB on EPA Water Map</a>
15	IE_SE_15B020080	BREGAGH (KILKENNY)_010	River	Kilkenny County Council		Moderate	Poor	Poor	Good	2022-2027	At risk	Sediment, Nutrients	Ag	Bregagh (Kilkenny)	LAWPRO, Restoration	<a href="#">View WB Page</a>	<a href="#">View WB on EPA Water Map</a>
15	IE_SE_15B020100	BREGAGH (KILKENNY)_020	River	Kilkenny County Council		Unassigned	Moderate	Moderate	Good	2022-2027	At risk	Morphological, Nutrients	Ag, For	Bregagh (Kilkenny)	LAWPRO, Restoration	<a href="#">View WB Page</a>	<a href="#">View WB on EPA Water Map</a>
15	IE_SE_15B020350	BREGAGH (KILKENNY)_030	River	Kilkenny County Council		Poor	Poor	Moderate	Good	2022-2027	At risk	Morphological, Nutrients	HYMO, Ag, Ind	Bregagh (Kilkenny)	LAWPRO, Restoration	<a href="#">View WB Page</a>	<a href="#">View WB on EPA Water Map</a>
15	IE_SE_15B041100	BROWNSTOWN (POCOCKE)_010	River	Kilkenny County Council	SAC;	Poor	Poor	Moderate	Good	2022-2027	At risk	Nutrients, Organic	UR	Brownstown (Pococke)	LAWPRO, Restoration	<a href="#">View WB Page</a>	<a href="#">View WB on EPA Water Map</a>
15	IE_SE_15B120080	BAUNBALLINLOUGH STREAM_010	River	Kilkenny County Council		Poor	Poor	Poor	Good	2022-2027	At risk	Morphological, Nutrients	Ag	Goul	LAWPRO, Restoration	<a href="#">View WB Page</a>	<a href="#">View WB on EPA Water Map</a>
15	IE_SE_15C010100	CASTLECOMER STREAM_010	River	Kilkenny County Council		Good	Moderate	Moderate	Good	2022-2027	At risk	Oxygetion, Nutrients	For, UR	Dinin	LAWPRO, Restoration	<a href="#">View WB Page</a>	<a href="#">View WB on EPA Water Map</a>
15	IE_SE_15C030300	CLOGH_010	River	Laois County Council	SAC;	Moderate	Good	Moderate	Good	2022-2027	At risk	Nutrients, Organic	Ag, UR	Dinin	LAWPRO, Restoration	<a href="#">View WB Page</a>	<a href="#">View WB on EPA Water Map</a>
15	IE_SE_15C040400	CLOGHNAGH_010	River	Kilkenny County Council	SAC;	Good	Good	Moderate	Good	2022-2027	Review					<a href="#">View WB Page</a>	<a href="#">View WB on EPA Water Map</a>
15	IE_SE_15C050100	Clodiagh_010	River	Kilkenny County Council	DWPA; SAC; SPA;	Unassigned	Good	Good	Good	2021 or earlier	Not at risk					<a href="#">View WB Page</a>	<a href="#">View WB on EPA Water Map</a>
15	IE_SE_15C060600	CAPPANACLOGHY_010	River	Laois County Council		Poor	Poor	Poor	Good	2022-2027	At risk	Nutrients, Organic, UnknowImpactType	Peat	Ballyroan	LAWPRO, Restoration	<a href="#">View WB Page</a>	<a href="#">View WB on EPA Water Map</a>
15	IE_SE_15C060900	CAPPANACLOGHY_020	River	Laois County Council		Good	Good	Poor	Good	2022-2027	At risk	Nutrients	Ag, Peat	Ballyroan	LAWPRO, Restoration	<a href="#">View WB Page</a>	<a href="#">View WB on EPA Water Map</a>
15	IE_SE_15C060990	CAPPANACLOGHY_030	River	Laois County Council	SAC; SPA;	Unassigned	Moderate	Moderate	Good	2022-2027	Review			Ballyroan	LAWPRO, Restoration	<a href="#">View WB Page</a>	<a href="#">View WB on EPA Water Map</a>
15	IE_SE_15C120400	CAHERLESK STREAM_010	River	Kilkenny County Council	SAC;	Poor	Poor	Poor	Good	2022-2027	At risk	Nutrients	Ag	Stoneyford-Kells-Burnchurch	LAWPRO, Restoration	<a href="#">View WB Page</a>	<a href="#">View WB on EPA Water Map</a>
15	IE_SE_15C191100	CLONAWOOLAN STREAM_010	River	Laois County Council		Poor	Poor	Poor	Good	2022-2027	At risk	Nutrients, Organic, UnknowImpactType	For, Ag, Peat	Ballyroan	LAWPRO, Restoration	<a href="#">View WB Page</a>	<a href="#">View WB on EPA Water Map</a>
15	IE_SE_15C200040	COALBROOK STREAM_010	River	Tipperary County Council		Good	Good	Good	Good	2021 or earlier	Not at risk					<a href="#">View WB Page</a>	<a href="#">View WB on EPA Water Map</a>
15	IE_SE_15D010060	DELOUR_010	River	Laois County Council	SAC;	High	High	Good	High	2022-2027	Review			Delour - Blue Dot	LAWPRO, Protection	<a href="#">View WB Page</a>	<a href="#">View WB on EPA Water Map</a>
15	IE_SE_15D010150	DELOUR_020	River	Laois County Council	SAC;	High	High	High	High	2021 or earlier	Not at risk			Delour - Blue Dot	LAWPRO, Protection	<a href="#">View WB Page</a>	<a href="#">View WB on EPA Water Map</a>
15	IE_SE_15D010400	DELOUR_030	River	Laois County Council	SAC; SPA;	High	High	Good	High	2022-2027	At risk	Sediment	Ag	Delour - Blue Dot	LAWPRO, Protection	<a href="#">View WB Page</a>	<a href="#">View WB on EPA Water Map</a>
15	IE_SE_15D020700	DININ (MAIN CHANNEL)_010	River	Kilkenny County Council	SAC;	Good	Moderate	Moderate	Good	2022-2027	At risk	Nutrients	Ag, DWTS	Dinin	LAWPRO, Restoration	<a href="#">View WB Page</a>	<a href="#">View WB on EPA Water Map</a>
15	IE_SE_15D020800	DININ (MAIN CHANNEL)_020	River	Kilkenny County Council	DWPA; SAC;	Moderate	Moderate	Moderate	Good	2022-2027	At risk	Hydrological, Nutrients, UnknowImpactType	Ag, Ab, M+Q	Dinin	LAWPRO, Restoration	<a href="#">View WB Page</a>	<a href="#">View WB on EPA Water Map</a>
15	IE_SE_15D030700	DONAGHMORE STREAM_010	River	Laois County Council		Moderate	Moderate	Poor	Good	2022-2027	At risk	Nutrients	Ag	Erkina	LAWPRO, Restoration	<a href="#">View WB Page</a>	<a href="#">View WB on EPA Water Map</a>
15	IE_SE_15D040500	DESART STREAM_010	River	Kilkenny County Council		Poor	Poor	Poor	Good	2022-2027	At risk	Morphological, Nutrients	For, Ag	Stoneyford-Kells-Burnchurch	LAWPRO, Restoration	<a href="#">View WB Page</a>	<a href="#">View WB on EPA Water Map</a>
15	IE_SE_15D070080	DININ (NORTH)_010	River	Laois County Council		Poor	Good	Moderate	Good	2022-2027	At risk	Nutrients	Ag	Dinin	LAWPRO, Restoration	<a href="#">View WB Page</a>	<a href="#">View WB on EPA Water Map</a>
15	IE_SE_15D070200	DININ (NORTH)_020	River	Kilkenny County Council	SAC;	Good	Good	Moderate	Good	2022-2027	At risk	Nutrients	Ag	Dinin	LAWPRO, Restoration	<a href="#">View WB Page</a>	<a href="#">View WB on EPA Water Map</a>

15	IE_SE_15D070250	DININ (NORTH)_030	River	Kilkenny County Council	DWPA; SAC;	Unassigned	Moderate	Moderate	Good	2022-2027	Review			Dinin	LAWPRO, Restoration	<a href="#">View WB Page</a>	<a href="#">View WB on EPA Water Map</a>
15	IE_SE_15D070400	DININ (NORTH)_040	River	Kilkenny County Council	SAC;	Good	Moderate	Moderate	Good	2022-2027	At risk	Nutrients, Organic	UWW, UR, Ag, DWTS	Dinin	LAWPRO, Restoration	<a href="#">View WB Page</a>	<a href="#">View WB on EPA Water Map</a>
15	IE_SE_15D080450	DININ (SOUTH)_010	River	Laois County Council		Good	Moderate	Good	Good	2021 or earlier	Not at risk			Dinin	LAWPRO, Restoration	<a href="#">View WB Page</a>	<a href="#">View WB on EPA Water Map</a>
15	IE_SE_15D080600	DININ (SOUTH)_020	River	Kilkenny County Council	SAC;	Moderate	Good	Good	Good	2021 or earlier	Not at risk			Dinin	LAWPRO, Restoration	<a href="#">View WB Page</a>	<a href="#">View WB on EPA Water Map</a>
15	IE_SE_15D420500	DREELINGSTOWN_010	River	Kilkenny County Council		Unassigned	Good	Moderate	Good	2022-2027	Review			Bregagh (Kilkenny)	LAWPRO, Restoration	<a href="#">View WB Page</a>	<a href="#">View WB on EPA Water Map</a>
15	IE_SE_15E010040	ERKINA_010	River	Laois County Council		Moderate	Good	Good	Good	2021 or earlier	Review			Erkina	LAWPRO, Restoration	<a href="#">View WB Page</a>	<a href="#">View WB on EPA Water Map</a>
15	IE_SE_15E010100	ERKINA_020	River	Laois County Council		Unassigned	Moderate	Moderate	Good	2022-2027	Review			Erkina	LAWPRO, Restoration	<a href="#">View WB Page</a>	<a href="#">View WB on EPA Water Map</a>
15	IE_SE_15E010200	ERKINA_030	River	Laois County Council		Poor	Moderate	Poor	Good	2022-2027	At risk	Nutrients	UWW, Ag	Erkina	LAWPRO, Restoration	<a href="#">View WB Page</a>	<a href="#">View WB on EPA Water Map</a>
15	IE_SE_15E010300	ERKINA_040	River	Laois County Council		Moderate	Poor	Moderate	Good	2022-2027	At risk	Sediment, Nutrients	Ag	Erkina	LAWPRO, Restoration	<a href="#">View WB Page</a>	<a href="#">View WB on EPA Water Map</a>
15	IE_SE_15E010550	ERKINA_050	River	Laois County Council	SAC; SPA;	Moderate	Moderate	Moderate	Good	2022-2027	At risk	Nutrients	Ag	Erkina	LAWPRO, Restoration	<a href="#">View WB Page</a>	<a href="#">View WB on EPA Water Map</a>
15	IE_SE_15E020700	ENNISNAG STREAM_010	River	Kilkenny County Council	SAC;	Poor	Poor	Poor	Good	2022-2027	At risk	Nutrients	Ag, DWTS	Stoneyford-Kells-Burnchurch	LAWPRO, Restoration	<a href="#">View WB Page</a>	<a href="#">View WB on EPA Water Map</a>
15	IE_SE_15E030400	ERRILL_010	River	Laois County Council		Unassigned	Good	Moderate	Good	2022-2027	Review			Erkina	LAWPRO, Restoration	<a href="#">View WB Page</a>	<a href="#">View WB on EPA Water Map</a>
15	IE_SE_15E030500	ERRILL_020	River	Laois County Council		Moderate	Good	Good	Good	2021 or earlier	Review			Erkina	LAWPRO, Restoration	<a href="#">View WB Page</a>	<a href="#">View WB on EPA Water Map</a>
15	IE_SE_15G010045	GLORY_010	River	Kilkenny County Council		Moderate	Poor	Poor	Good	2022-2027	At risk	Sediment, Nutrients, Organic	UWW, HYMO, Ag	Glory Kilkenny	LAWPRO, Restoration	<a href="#">View WB Page</a>	<a href="#">View WB on EPA Water Map</a>
15	IE_SE_15G010190	GLORY_020	River	Kilkenny County Council	SAC;	Unassigned	Moderate	Moderate	Good	2022-2027	At risk	Nutrients	For, Ag	Glory Kilkenny	LAWPRO, Restoration	<a href="#">View WB Page</a>	<a href="#">View WB on EPA Water Map</a>
15	IE_SE_15G010300	GLORY_030	River	Kilkenny County Council	SAC;	Good	Moderate	Poor	Good	2022-2027	At risk	Nutrients, Organic	UR, Ag	Glory Kilkenny	LAWPRO, Restoration	<a href="#">View WB Page</a>	<a href="#">View WB on EPA Water Map</a>
15	IE_SE_15G020060	GOUL_010	River	Tipperary County Council		Unassigned	Good	Moderate	Good	2022-2027	Review			Goul	LAWPRO, Restoration	<a href="#">View WB Page</a>	<a href="#">View WB on EPA Water Map</a>
15	IE_SE_15G020110	GOUL_020	River	Tipperary County Council		Unassigned	Good	Poor	Good	2022-2027	Review			Goul	LAWPRO, Restoration	<a href="#">View WB Page</a>	<a href="#">View WB on EPA Water Map</a>
15	IE_SE_15G020200	GOUL_030	River	Kilkenny County Council	SAC;	Unassigned	Moderate	Moderate	Good	2022-2027	At risk	Nutrients	Ag	Goul	LAWPRO, Restoration	<a href="#">View WB Page</a>	<a href="#">View WB on EPA Water Map</a>
15	IE_SE_15G020300	GOUL_040	River	Kilkenny County Council		Moderate	Moderate	Poor	Good	2022-2027	At risk	Morphological, Nutrients	For, Ag	Goul	LAWPRO, Restoration	<a href="#">View WB Page</a>	<a href="#">View WB on EPA Water Map</a>
15	IE_SE_15G020360	GOUL_050	River	Kilkenny County Council		Moderate	Moderate	Moderate	Good	2022-2027	At risk	Nutrients	Ag	Goul	LAWPRO, Restoration	<a href="#">View WB Page</a>	<a href="#">View WB on EPA Water Map</a>
15	IE_SE_15G020500	GOUL_060	River	Laois County Council	SAC; SPA;	Moderate	Poor	Poor	Good	2022-2027	At risk	Sediment, Morphological, Nutrients	HYMO, Ag	Goul	LAWPRO, Restoration	<a href="#">View WB Page</a>	<a href="#">View WB on EPA Water Map</a>
15	IE_SE_15G030060	GULLY_010	River	Laois County Council		Poor	Poor	Poor	Good	2022-2027	At risk	Morphological, Nutrients	Ag	Gully	LAWPRO, Restoration	<a href="#">View WB Page</a>	<a href="#">View WB on EPA Water Map</a>
15	IE_SE_15G030100	GULLY_020	River	Laois County Council		Poor	Moderate	Poor	Good	2022-2027	At risk	Sediment, Hydrological, Morphological	HYMO	Gully	LAWPRO, Restoration	<a href="#">View WB Page</a>	<a href="#">View WB on EPA Water Map</a>
15	IE_SE_15G030300	GULLY_030	River	Laois County Council		Good	Good	Good	Good	2021 or earlier	Not at risk			Gully	LAWPRO, Restoration	<a href="#">View WB Page</a>	<a href="#">View WB on EPA Water Map</a>
15	IE_SE_15G080300	GORTEENAHILLA_010	River	Kilkenny County Council		Good	Poor	Moderate	Good	2022-2027	At risk	Oxygetion, Nutrients	For, Ag	Nuenna	LAWPRO, Restoration	<a href="#">View WB Page</a>	<a href="#">View WB on EPA Water Map</a>
15	IE_SE_15G100060	GARRANACOOLO STREAM_010	River	Tipperary County Council		Good	Good	Good	Good	2021 or earlier	Not at risk					<a href="#">View WB Page</a>	<a href="#">View WB on EPA Water Map</a>
15	IE_SE_15G720980	GLEBE_010	River	Kilkenny County Council	SAC;	Unassigned	Moderate	Moderate	Good	2022-2027	Review					<a href="#">View WB Page</a>	<a href="#">View WB on EPA Water Map</a>
15	IE_SE_15G820400	Glory River_010	River	Kilkenny County Council		Unassigned	Good	Moderate	Good	2022-2027	Review			Glory Kilkenny	LAWPRO, Restoration	<a href="#">View WB Page</a>	<a href="#">View WB on EPA Water Map</a>
15	IE_SE_15H010300	HOLLY PARK STREAM_010	River	Laois County Council		Unassigned	Moderate	Moderate	Good	2022-2027	At risk	Nutrients, Organic	Ag	Dinin	LAWPRO, Restoration	<a href="#">View WB Page</a>	<a href="#">View WB on EPA Water Map</a>
15	IE_SE_15K010400	KILLEEN (DELOUR)_010	River	Laois County Council	SAC;	High	Good	Good	High	2022-2027	At risk	Sediment, Oxygetion	Ag, DWTS, For	Delour - Blue Dot	LAWPRO, Protection	<a href="#">View WB Page</a>	<a href="#">View WB on EPA Water Map</a>
15	IE_SE_15K020200	KING'S (KILKENNY)_010	River	Tipperary County Council		Good	Good	Moderate	Good	2022-2027	At risk	Nutrients	Ag	King's (Kilkenny) Tipperary	Tipperary County Council, Protection	<a href="#">View WB Page</a>	<a href="#">View WB on EPA Water Map</a>
15	IE_SE_15K020400	KING'S (KILKENNY)_020	River	Tipperary County Council	SAC;	Unassigned	Moderate	Moderate	Good	2022-2027	Review					<a href="#">View WB Page</a>	<a href="#">View WB on EPA Water Map</a>
15	IE_SE_15K020560	KING'S (KILKENNY)_030	River	Kilkenny County Council	SAC;	Good	Moderate	Good	Good	2021 or earlier	Review					<a href="#">View WB Page</a>	<a href="#">View WB on EPA Water Map</a>
15	IE_SE_15K020600	KING'S (KILKENNY)_040	River	Kilkenny County Council	SAC; SPA;	Moderate	Moderate	Moderate	Good	2022-2027	At risk	Morphological, Nutrients, Organic	Other, HYMO, Ag	Caherleske GWS	NFGWS, Restoration	<a href="#">View WB Page</a>	<a href="#">View WB on EPA Water Map</a>
15	IE_SE_15K020910	KING'S (KILKENNY)_050	River	Kilkenny County Council	SAC; SPA;	Moderate	Moderate	Bad	Good	2022-2027	At risk	Nutrients	Ag	Stoneyford-Kells-Burnchurch	LAWPRO, Restoration	<a href="#">View WB Page</a>	<a href="#">View WB on EPA Water Map</a>
15	IE_SE_15K540650	KILDERRY_010	River	Kilkenny County Council		Unassigned	Good	Moderate	Good	2022-2027	Review			Brownstown (Pococke)	LAWPRO, Restoration	<a href="#">View WB Page</a>	<a href="#">View WB on EPA Water Map</a>
15	IE_SE_15K750910	Knockwilliam_010	River	Kilkenny County Council	SAC;	Unassigned	Moderate	Moderate	Good	2022-2027	Review					<a href="#">View WB Page</a>	<a href="#">View WB on EPA Water Map</a>
15	IE_SE_15L010200	LITTLE ARRIGLE_010	River	Kilkenny County Council	SAC;	Unassigned	Moderate	Moderate	Good	2022-2027	At risk	Nutrients, Organic	UWW, Ind, UR			<a href="#">View WB Page</a>	<a href="#">View WB on EPA Water Map</a>
15	IE_SE_15L020100	LISDOWNEY_010	River	Kilkenny County Council		Moderate	Good	Moderate	Good	2022-2027	At risk	Nutrients	Ag	Nuenna	LAWPRO, Restoration	<a href="#">View WB Page</a>	<a href="#">View WB on EPA Water Map</a>
15	IE_SE_15M010080	MOUNTRATH_010	River	Laois County Council	SAC;	Good	Good	Good	Good	2021 or earlier	Not at risk			Mountrath	LAWPRO, Restoration	<a href="#">View WB Page</a>	<a href="#">View WB on EPA Water Map</a>



15	IE_SE_15M010100	MOUNTRATH_020	River	Laois County Council	SAC;	Good	Moderate	Moderate	Good	2022-2027	At risk	Oxygetion, Nutrients, Organic	For	Mountrath	LAWPRO, Restoration	<a href="#">View WB Page</a>	<a href="#">View WB on EPA Water Map</a>
15	IE_SE_15M010300	MOUNTRATH_030	River	Laois County Council	SAC;	Good	Moderate	Moderate	Good	2022-2027	At risk	Oxygetion, Organic	Ag	Mountrath	LAWPRO, Restoration	<a href="#">View WB Page</a>	<a href="#">View WB on EPA Water Map</a>
15	IE_SE_15M020100	MUCKALEE_010	River	Kilkenny County Council		Good	Good	Good	High	2022-2027	At risk	Sediment, Nutrients	For	Dinin	LAWPRO, Restoration	<a href="#">View WB Page</a>	<a href="#">View WB on EPA Water Map</a>
15	IE_SE_15M030540	MUNSTER_010	River	Kilkenny County Council	SAC;	Good	Good	Good	Good	2021 or earlier	Not at risk					<a href="#">View WB Page</a>	<a href="#">View WB on EPA Water Map</a>
15	IE_SE_15M030600	MUNSTER_020	River	Tipperary County Council	SAC;	Good	Good	Good	Good	2021 or earlier	Not at risk					<a href="#">View WB Page</a>	<a href="#">View WB on EPA Water Map</a>
15	IE_SE_15M030700	MUNSTER_030	River	Kilkenny County Council	SAC;	Good	Good	Good	Good	2021 or earlier	Not at risk					<a href="#">View WB Page</a>	<a href="#">View WB on EPA Water Map</a>
15	IE_SE_15M340730	MODESHIL_010	River	Tipperary County Council	SAC;	Unassigned	Moderate	Moderate	Good	2022-2027	Review					<a href="#">View WB Page</a>	<a href="#">View WB on EPA Water Map</a>
15	IE_SE_15N010080	NORE_010	River	Tipperary County Council	Fish;	Good	Good	Moderate	Good	2022-2027	Review					<a href="#">View WB Page</a>	<a href="#">View WB on EPA Water Map</a>
15	IE_SE_15N010100	NORE_020	River	Tipperary County Council	Fish;	Unassigned	Good	Moderate	Good	2022-2027	Review			Couraguneen GWS	NFGWS, Protection	<a href="#">View WB Page</a>	<a href="#">View WB on EPA Water Map</a>
15	IE_SE_15N010200	NORE_030	River	Tipperary County Council	Fish;	Unassigned	Good	Moderate	Good	2022-2027	Review					<a href="#">View WB Page</a>	<a href="#">View WB on EPA Water Map</a>
15	IE_SE_15N010300	NORE_040	River	Tipperary County Council	Fish;	Good	Moderate	Poor	Good	2022-2027	At risk	Nutrients, Organic	Peat			<a href="#">View WB Page</a>	<a href="#">View WB on EPA Water Map</a>
15	IE_SE_15N010400	NORE_050	River	Laois County Council	Fish;	Unassigned	Moderate	Moderate	Good	2022-2027	Review					<a href="#">View WB Page</a>	<a href="#">View WB on EPA Water Map</a>
15	IE_SE_15N010500	NORE_060	River	Laois County Council	Fish; SPA;	Good	Good	Good	Good	2021 or earlier	Not at risk					<a href="#">View WB Page</a>	<a href="#">View WB on EPA Water Map</a>
15	IE_SE_15N010600	NORE_070	River	Laois County Council	SAC; Fish; SPA;	Unassigned	High	Good	Good	2021 or earlier	Not at risk					<a href="#">View WB Page</a>	<a href="#">View WB on EPA Water Map</a>
15	IE_SE_15N010700	NORE_080	River	Laois County Council	SAC; Fish; SPA;	Good	High	Good	Good	2021 or earlier	Not at risk					<a href="#">View WB Page</a>	<a href="#">View WB on EPA Water Map</a>
15	IE_SE_15N010900	NORE_090	River	Laois County Council	SAC; Fish; SPA;	Good	High	High	Good	2021 or earlier	Not at risk					<a href="#">View WB Page</a>	<a href="#">View WB on EPA Water Map</a>
15	IE_SE_15N011100	NORE_100	River	Laois County Council	SAC; Fish; SPA;	Good	High	Good	Good	2021 or earlier	Not at risk					<a href="#">View WB Page</a>	<a href="#">View WB on EPA Water Map</a>
15	IE_SE_15N011300	NORE_110	River	Laois County Council	SAC; Fish; SPA;	Good	Good	Good	Good	2021 or earlier	Not at risk			Gully	LAWPRO, Restoration	<a href="#">View WB Page</a>	<a href="#">View WB on EPA Water Map</a>
15	IE_SE_15N011400	NORE_120	River	Kilkenny County Council	DWPA; SAC; Fish; SPA;	Unassigned	Good	Moderate	Good	2022-2027	At risk	Nutrients	Ag			<a href="#">View WB Page</a>	<a href="#">View WB on EPA Water Map</a>
15	IE_SE_15N011500	NORE_130	River	Kilkenny County Council	SAC; Fish; SPA;	Good	Good	Good	Good	2021 or earlier	Not at risk					<a href="#">View WB Page</a>	<a href="#">View WB on EPA Water Map</a>
15	IE_SE_15N011600	NORE_140	River	Kilkenny County Council	SAC; Fish; SPA;	Unassigned	Good	Good	Good	2021 or earlier	Not at risk					<a href="#">View WB Page</a>	<a href="#">View WB on EPA Water Map</a>
15	IE_SE_15N011700	NORE_150	River	Kilkenny County Council	SAC; Fish; SPA;	Good	Good	Good	Good	2021 or earlier	Not at risk					<a href="#">View WB Page</a>	<a href="#">View WB on EPA Water Map</a>
15	IE_SE_15N011750	NORE_160	River	Kilkenny County Council	DWPA; SAC; Fish; SPA;	Unassigned	Good	Good	Good	2021 or earlier	Not at risk					<a href="#">View WB Page</a>	<a href="#">View WB on EPA Water Map</a>
15	IE_SE_15N011950	NORE_170	River	Kilkenny County Council	SAC; Fish; SPA;	Good	Good	Good	Good	2021 or earlier	Not at risk					<a href="#">View WB Page</a>	<a href="#">View WB on EPA Water Map</a>
15	IE_SE_15N012000	NORE_180	River	Kilkenny County Council	SAC; Fish; SPA;	Good	Good	Good	Good	2021 or earlier	Not at risk			Maddoxtown GWS	NFGWS, Protection	<a href="#">View WB Page</a>	<a href="#">View WB on EPA Water Map</a>
15	IE_SE_15N012090	NORE_190	River	Kilkenny County Council	SAC; Fish; SPA; NSA;	Unassigned	Moderate	Moderate	Good	2022-2027	Review			Clifden - The Highrath GWS	NFGWS, Protection	<a href="#">View WB Page</a>	<a href="#">View WB on EPA Water Map</a>
15	IE_SE_15N012130	NORE_200	River	Kilkenny County Council	SAC; Fish; SPA; NSA;	Unassigned	Moderate	Good	Good	2021 or earlier	Review					<a href="#">View WB Page</a>	<a href="#">View WB on EPA Water Map</a>
15	IE_SE_15N012200	NORE_210	River	Kilkenny County Council	SAC; Fish; SPA; NSA;	Moderate	Good	Good	Good	2021 or earlier	Review					<a href="#">View WB Page</a>	<a href="#">View WB on EPA Water Map</a>
15	IE_SE_15N012310	NORE_220	River	Kilkenny County Council	DWPA; SAC; Fish; SPA; NSA;	Good	Moderate	Good	Good	2021 or earlier	Review					<a href="#">View WB Page</a>	<a href="#">View WB on EPA Water Map</a>
15	IE_SE_15N012330	NORE_230	River	Kilkenny County Council	SAC; Fish; SPA;	Good	Moderate	Moderate	Good	2022-2027	At risk	Nutrients	UR			<a href="#">View WB Page</a>	<a href="#">View WB on EPA Water Map</a>
15	IE_SE_15N012400	NORE_240	River	Kilkenny County Council	SAC; Fish; SPA; NSA;	Good	Moderate	Good	Good	2021 or earlier	Review					<a href="#">View WB Page</a>	<a href="#">View WB on EPA Water Map</a>
15	IE_SE_15N012500	NORE_250	River	Kilkenny County Council	SAC; Fish; SPA; NSA;	Good	Good	Good	Good	2021 or earlier	Not at risk					<a href="#">View WB Page</a>	<a href="#">View WB on EPA Water Map</a>
15	IE_SE_15N020100	NUENNA_010	River	Kilkenny County Council		Poor	Moderate	Moderate	Good	2022-2027	At risk	Nutrients	Ag	Nuenna	LAWPRO, Restoration	<a href="#">View WB Page</a>	<a href="#">View WB on EPA Water Map</a>
15	IE_SE_15N020400	NUENNA_020	River	Kilkenny County Council	SAC; SPA;	Poor	Moderate	Poor	Good	2022-2027	At risk	Nutrients, Organic	Ag, UWW	Nuenna	LAWPRO, Restoration	<a href="#">View WB Page</a>	<a href="#">View WB on EPA Water Map</a>
15	IE_SE_15N040200	NEEDLEFORD STREAM_010	River	Laois County Council	SAC;	Good	High	Good	High	2022-2027	At risk	Hydrological, Nutrients, Organic	Ab, Ag, Peat	Mountrath	LAWPRO, Restoration	<a href="#">View WB Page</a>	<a href="#">View WB on EPA Water Map</a>
15	IE_SE_15O010050	OWVEG (NORE)_010	River	Laois County Council		Good	Good	Good	Good	2021 or earlier	Not at risk					<a href="#">View WB Page</a>	<a href="#">View WB on EPA Water Map</a>
15	IE_SE_15O010080	OWVEG (NORE)_020	River	Laois County Council	SAC;	Good	Good	Good	Good	2021 or earlier	Not at risk					<a href="#">View WB Page</a>	<a href="#">View WB on EPA Water Map</a>
15	IE_SE_15O010160	OWVEG (NORE)_030	River	Laois County Council	SAC;	Moderate	Good	Good	Good	2021 or earlier	Not at risk			Ballypickas GWS	NFGWS, Protection	<a href="#">View WB Page</a>	<a href="#">View WB on EPA Water Map</a>
15	IE_SE_15O010280	OWVEG (NORE)_040	River	Kilkenny County Council	SAC; SPA;	Good	Good	Good	Good	2021 or earlier	Not at risk					<a href="#">View WB Page</a>	<a href="#">View WB on EPA Water Map</a>
15	IE_SE_15O010400	OWVEG (NORE)_050	River	Laois County Council	SAC; SPA;	Good	Good	Good	Good	2021 or earlier	Not at risk			Attanagh GWS	NFGWS, Protection	<a href="#">View WB Page</a>	<a href="#">View WB on EPA Water Map</a>
15	IE_SE_15R031100	RATHDOWNEY STREAM_010	River	Laois County Council		Poor	Poor	Poor	Good	2022-2027	At risk	Nutrients	Ag	Erkina	LAWPRO, Restoration	<a href="#">View WB Page</a>	<a href="#">View WB on EPA Water Map</a>
15	IE_SE_15R370950	RATHGARVAN_or_CLIFDEN_010	River	Kilkenny County Council	SAC; SPA;	Unassigned	Moderate	Poor	Good	2022-2027	Review			Brownstown (Pococke)	LAWPRO, Restoration	<a href="#">View WB Page</a>	<a href="#">View WB on EPA Water Map</a>

15	IE_SE_15S010100	STONYFORD STREAM (KILKENNY)_010	River	Kilkenny County Council		Unassigned	Moderate	Poor	Good	2022-2027	At risk	Nutrients	Ag, DWTS	Stoneyford-Kells-Burnchurch	LAWPRO, Restoration	<a href="#">View WB Page</a>	<a href="#">View WB on EPA Water Map</a>
15	IE_SE_15T010200	TONET_010	River	Laois County Council	SAC;	High	High	Good	High	2022-2027	At risk	UnknownImpactType	For	Tonet	LAWPRO, Restoration	<a href="#">View WB Page</a>	<a href="#">View WB on EPA Water Map</a>
15	IE_SE_15T010400	TONET_020	River	Laois County Council		Poor	Moderate	Moderate	Good	2022-2027	At risk	UnknownImpactType	For	Tonet	LAWPRO, Restoration	<a href="#">View WB Page</a>	<a href="#">View WB on EPA Water Map</a>
15	IE_SE_15T010600	TONET_030	River	Laois County Council	SAC; SPA;	Moderate	Moderate	Moderate	Good	2022-2027	At risk	UnknownImpactType	For	Tonet	LAWPRO, Restoration	<a href="#">View WB Page</a>	<a href="#">View WB on EPA Water Map</a>
15	IE_SE_15T020200	TULLAROAN STREAM_010	River	Kilkenny County Council		Unassigned	Poor	Moderate	Good	2022-2027	Review			Tullaroan stream	Kilkenny County Council, Protection	<a href="#">View WB Page</a>	<a href="#">View WB on EPA Water Map</a>
15	IE_SE_15T020250	TULLAROAN STREAM_020	River	Kilkenny County Council		Good	Good	Good	Good	2021 or earlier	Not at risk			Tullaroan stream	Kilkenny County Council, Protection	<a href="#">View WB Page</a>	<a href="#">View WB on EPA Water Map</a>
15	IE_SE_15T020450	TULLAROAN STREAM_030	River	Kilkenny County Council	SAC;	Good	Good	Good	Good	2021 or earlier	Review			Tullaroan stream	Kilkenny County Council, Protection	<a href="#">View WB Page</a>	<a href="#">View WB on EPA Water Map</a>
15	IE_SE_15T360920	TULLAGHER_010	River	Kilkenny County Council	SAC;	Unassigned	Good	Good	Good	2021 or earlier	Review					<a href="#">View WB Page</a>	<a href="#">View WB on EPA Water Map</a>
14, 15	IE_SE_100_0200	New Ross Port	Transitional	Wexford County Council	SAC; SF; NSA;	Moderate	Moderate	Moderate	Good	2022-2027	At risk	Nutrients, Organic	Ag			<a href="#">View WB Page</a>	<a href="#">View WB on EPA Water Map</a>
14, 15	IE_SE_100_0250	Barrow Nore Estuary Upper	Transitional	Wexford County Council	SAC; NSA;	Good	Moderate	Moderate	Good	2022-2027	At risk	Nutrients	UR, Ag			<a href="#">View WB Page</a>	<a href="#">View WB on EPA Water Map</a>
14, 15	IE_SE_100_0300	Upper Barrow Estuary	Transitional	Kilkenny County Council	SAC; NSA;	Good	Good	Moderate	Good	2022-2027	At risk	Nutrients	Ag			<a href="#">View WB Page</a>	<a href="#">View WB on EPA Water Map</a>
14, 15	IE_SE_100_0400	Nore Estuary	Transitional	Kilkenny County Council	SAC; SPA; NSA;	Moderate	Good	Moderate	Good	2022-2027	At risk	Nutrients, Organic	Ag			<a href="#">View WB Page</a>	<a href="#">View WB on EPA Water Map</a>
14, 15, 16	IE_SE_100_0500	Lower Suir Estuary (Little Island - Cheekpoint)	Transitional	Waterford City & County Council	SAC; SF; NSA;	Moderate	Good	Moderate	Good	2022-2027	At risk	Nutrients, Organic	Ag			<a href="#">View WB Page</a>	<a href="#">View WB on EPA Water Map</a>